



Flight Plan & Site Survey

Created using **RPAS Wilco®**

Operation Name:	sudbury
Pilot Name:	██████████
Pilot Certificate:	██████████
Flight Start:	April 5, 2023 6:20 PM
Flight End:	April 5, 2023 8:20 PM
Flight Area (Latitude):	46° 30' 19.30" N (46.505)
Flight Area (Longitude):	80° 50' 18.30" W (-80.838)
Altitude - Radius:	Alt: 700 ft - Rad: 555.6 m (0.3 nm)
Airspace:	UNCONTROLLED
FIR - Contact:	CZYZ - 905-676-4509

Please ensure you received all required authorizations prior to flight.

Disclaimer

This Site Survey was created using RPAS Wilco by AIM Robotics. The flight plan contained is intended only for RPAS flights on the date/time and location specified. The user accepts all responsibility for the accuracy and completeness of the information contained.

For the complete Terms & Conditions, see

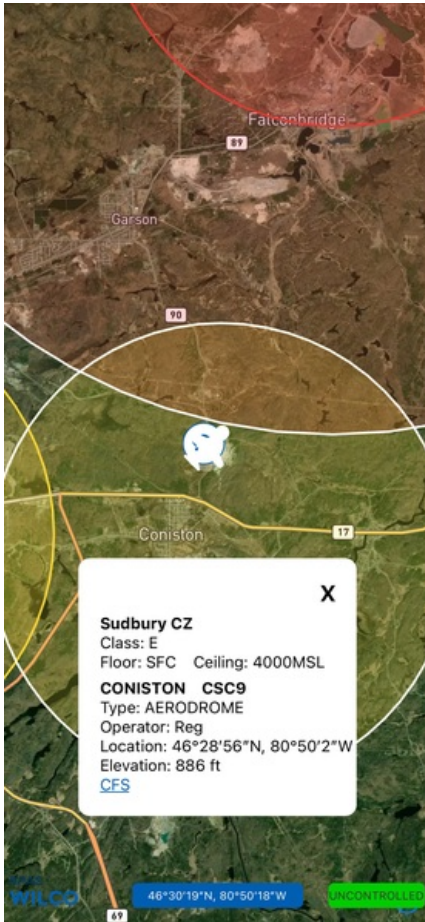
<https://rpaswilco.com/#/tnc>

Included



- Site Survey
- Obstacles (if available)
- Nearby Aerodromes
- Canadian Aviation Regulations
- GFA
- Aerodrome Supplements
 - METAR & TAF (if available)
 - NOTAMS
 - CFS



Flight Map



MAP Details

	Latitude	Longitude
 MODEL	46° 30' 19.30" N (46.505)	80° 50' 18.30" W (-80.838)
 Pilot	46° 30' 22.90" N (46.5064)	80° 50' 21.90" W (-80.8394)



Airspace Classification



Overlying Airspaces

Class	Name	Floor	Ceiling
E	Southern Ontario Low Level Control Area CAE	3500MSL	12500MSL
B	Southern Ontario Low Level Control Area CAE	12500MSL	18000MSL
B	Sudbury, ON TA	12500MSL	18000MSL
E	Sudbury, ON TA	2400MSL	12500MSL
E	T656 Airway	2200AGL	12500MSL
B	T656 Airway	12500MSL	18000MSL

Nearest Aerodromes & Distance from Operation

CONISTON (CSC9 AERODROME Reg)	Lat: 46.482 Long: 80.834	2.62 KM	1.41 NM
RAMSEY LAKE (CNB8 WATERDROME Reg)	Lat: 46.487 Long: 80.959	9.453 KM	5.1 NM
SUDBURY (CYSB AERODROME Cert)	Lat: 46.625 Long: 80.798	13.657 KM	7.37 NM
SUDBURY (HEALTH SCIENCES NORTH) (CSL8 HELIPORT Cert)	Lat: 46.468 Long: 80.996	12.76 KM	6.89 NM

Canadian Aviation Regulations

Division III — General Operating and Flight Rules

For full listing please visit <https://laws-lois.justice.gc.ca/eng/regulations/SOR-96-433/FullText.html#s-901.27>

Visual Line-of-sight

- **901.11 (1)** Subject to subsection (2) no pilot shall operate a remotely piloted aircraft system unless the pilot or a visual observer has the aircraft in visual line-of-sight at all times during flight.
- **(2)** A pilot may operate a remotely piloted aircraft system without the pilot or a visual observer having the aircraft in visual line-of-sight if the operation is conducted in accordance with a special flight operations certificate — RPAS issued under section 903.03.

Procedures

- **901.23 (1)** No pilot shall operate a remotely piloted aircraft system unless the following procedures are established:
 - **(a)** normal operating procedures, including pre-flight, take-off, launch, approach, landing and recovery procedures; and
 - **(b)** emergency procedures, including with respect to
 - **(i)** a control station failure,
 - **(ii)** an equipment failure,
 - **(iii)** a failure of the remotely piloted aircraft,
 - **(iv)** a loss of the command and control link,
 - **(v)** a fly-away, and
 - **(vi)** flight termination.
- **(2)** If the manufacturer of the remotely piloted aircraft system provides instructions with respect to the topics referred to in paragraphs (1)(a) and (b), the procedures established under subsection (1) shall reflect those instructions.
- **(3)** No pilot shall conduct the take-off or launch of a remotely piloted aircraft unless the procedures referred to in subsection (1) are reviewed before the flight by, and are immediately available to, each crew member.
- **(4)** No pilot shall operate a remotely piloted aircraft system unless the operation is conducted in accordance with the procedures referred to in subsection (1).

Site Survey

901.27 No pilot shall operate a remotely piloted aircraft system unless, before commencing operations, they determine that the site for take-off, launch, landing or recovery is suitable for the proposed operation by conducting a site survey that takes into account the following factors:

- **(a)** the boundaries of the area of operation;
- **(b)** the type of airspace and the applicable regulatory requirements;
- **(c)** the altitudes and routes to be used on the approach to and departure from the area of operation;
- **(d)** the proximity of manned aircraft operations;
- **(e)** the proximity of aerodromes, airports and heliports;
- **(f)** the location and height of obstacles, including wires, masts, buildings, cell phone towers and wind turbines;
- **(g)** the predominant weather and environmental conditions for the area of operation; and
- **(h)** the horizontal distances from persons not involved in the operation.

Operations at or in the Vicinity of an Aerodrome, Airport or Heliport

- **901.47 (1)** No pilot shall operate a remotely piloted aircraft at or near an aerodrome that is listed in the *Canada Flight Supplement* or the *Water Aerodrome Supplement* in a manner that could interfere with an aircraft operating in the established traffic pattern.
- **(2)** Subject to section 901.73 no pilot shall operate a remotely piloted aircraft at a distance of less than
 - **(a)** three nautical miles from the centre of an airport; and
 - **(b)** one nautical mile from the centre of a heliport.
- **(3)** No pilot shall operate a remotely piloted aircraft at a distance of less than three nautical miles from the centre of an aerodrome operated under the authority of the Minister of National Defence unless the operation is conducted in accordance with a special flight operations certificate — RPAS issued under section 903.03.

Records

- **901.48 (1)** Every owner of a remotely piloted aircraft system shall keep the following records:
 - **(a)** a record containing the names of the pilots and other crew members who are involved in each flight and, in respect of the system, the time of each flight or series of flights and
 - **(b)** a record containing the particulars of any mandatory action and any other maintenance action, modification or repair performed on the system, including
 - **(i)** the names of the persons who performed them,
 - **(ii)** the dates they were undertaken,
 - **(iii)** in the case of a modification, the manufacturer, model and a description of the part or equipment installed to modify the system, and
 - **(iv)** if applicable any instructions provided to complete the work.
- **(2)** Every owner of a remotely piloted aircraft system shall ensure that the records referred to in subsection (1) are made available to the Minister on request and are retained for a period of
 - **(a)** in the case of the records referred to in paragraph (1)(a), 12 months after the day on which they are created; and
 - **(b)** in the case of the records referred to in paragraph (1)(b), 24 months after the day on which they are created.
- **(3)** Every owner of a remotely piloted aircraft system who transfers ownership of the system to another person shall, at the time of transfer, also deliver to that person all of the records referred to in paragraph (1)(b).

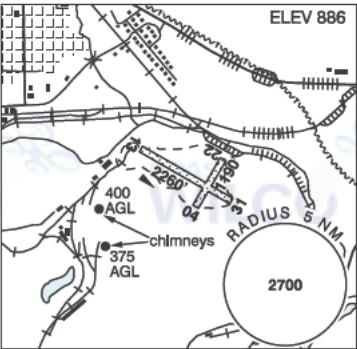
ONTARIO

AERODROME/FACILITY DIRECTORY

SUDBURY / CONISTON ON

CSC9

REF	N46 28 56 W80 50 02 6E 11°W UTC-5(4) Elev 886' A5000 A5001
OPR	Central North Flying Club 705-694-9000 Reg
PF	A-1 avbl 11-02Z seasonal C-1,2,4,5 D-3,6
FLT PLN	FIC London 866-WXBRIEF (Toll free within Canada) or 866-541-4104 (Toll free within Canada & USA)
SERVICES	
FUEL	100LL
OIL	W80, 15W-50, 80
S	1,4,5,6
RWY DATA	Rwy 13/31 2260x35 treated gravel Rwy 13 up 2.3% Rwy 04/22 1190x35 treated gravel
APRON	Overnight prkg fees only (waived with fuel purchase).
RCR	Opr PN No win maint.
COMM	
RCO	London rdo 123.475 (FISE) 126.7(bcst)
ATF	tfc 123.0 5NM 3900 ASL Excluding the Sudbury aprt CZ.
PAL	Toronto Ctr 135.5
CAUTION	Aerodrome is within 8NM of CYSB, obstacles on apch to Rwy 31 & Rwy 04, twr aprx 1/2NM E of Rwy 31 hgt unkn, twr aprx 1NM NW of aerodrome & twin smoke stacks aprx 400 AGL 1NM SW of aerodrome. Extv float/ski/helicopter tfc in vic Azilda, ATF 122.8.



CANADA WATER AERODROME SUPPLEMENT

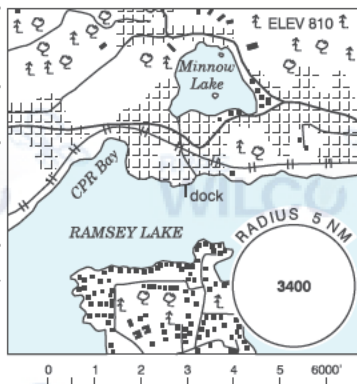
Effective 0901Z 24 March 2022 to 0901Z 20 April 2023

B226 AERODROME/FACILITY DIRECTORY

SUDBURY / RAMSEY LAKE ON

CNB8

REF	N46 29 12 W80 57 32 1.4ESE 10°W (2018) UTC-5(4) Elev 810' A5000 A5001
OPR	David Chisholm 705-662-1609 Reg PPR
FLT PLN	
FIC	London 866-WXBRIEF (Toll free within Canada) or 866-541-4104 (Toll free within Canada & USA)
A/D DATA	Open water May-Nov
COMM	
ATF	tfc 123.0 5NM centred on Sudbury (Health Sciences North) 1.9NM WSW 4000 ASL, excluding the Azilda ATF area

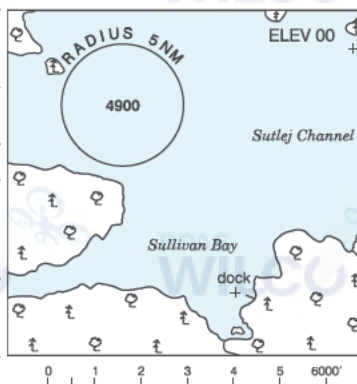


CAUTION Extv float/ski/helicopter tfc in vic Azilda, ATF 122.8. See Sudbury VTPC.

SULLIVAN BAY BC

CAV5

REF	N50 53 08 W126 49 37 Adj N 18°E (2014) UTC-8(7) Elev 00' A5004
OPR	Broughton Island Ventures Ltd 604-484-9193 Reg
PF	B-1,2 D-3,4,5,6 (15 May-1 Oct)
FLT PLN	
FIC	Kamloops 866-WXBRIEF (Toll free within Canada) or 866-541-4101 (Toll free within Canada & USA)
SERVICES	
FUEL	MG-2
S	4,5
COMM	
ATF	tfc 123.2 2NM 1500 ASL




CAUTION Extensive boat activity in area.

ONTARIO

AERODROME/FACILITY DIRECTORY

SUDBURY ON

CYSB

REF	N46 37 32 W80 47 52 11NE 10°W (2012) UTC-5(4) Elev 1143' A5000 A5001 LO4 HI4 HI5 CAP	
OPR	Muni 705-693-2514 Cert	
PF	A-1,2,3,6,7 C-4,5	
CUST	AOE/15 888-226-7277 1330-2130Z± Mon-Fri exc hols	
FLT PLN	Pilots to open/close VFR flt plan with London rdo, FISE or by phone.	
FIC	London 866-WXBRIEF (Toll free within Canada) or 866-541-4104 (Toll free within Canada & USA)	
WX	METAR H24. TAF H24, issue times: 02, 08, 14 & 20Z.	
SERVICES	Call out chg may be levied for one or more svcs.	
FUEL	100LL, JA-1 (FSII avbl), HPR	
OIL	All	
S	1,2,3	
ARFF	PARTICIPATING CAT 5 (CAT 7 3 hrs PN) 1100-0400Z± O/T PN call out chg.	
SUP FL	D & A-ice	
PVT ADV	Northern Aviation Services/Shell 122.95 705-693-2972 12-02Z± Mon-Fri, 13-01Z± Sat-Sun Page 24 hrs 705-671-6945; Executive Aviation Fuels Ltd/World Fuels Service 122.35 0900-0100Z± O/T 705-699-0079 or 705-822-6585	
MIL CON	Northern Aviation Services (Shell) 705-693-2972	
RWY DATA	Rwy 04(040°)/22(220°) 6600x150 ASPH Rwy 12(116°)/30(296°) 5000x150 ASPH Rwy 12 Up 0.3%	
RWY CERT	Rwy 04 RVR 1200(1/4sm)/Rwy 22 RVR 1200(1/4sm) AGN IV Rwy 12/30 AGN IV	
TWY CERT	Twy D AGN IIIB	
APRON	Apron I rstd to sked commercial air carrier by stand assignment only fr Greater Sudbury Airport. Apron III itinerant acft parking to be arranged through PVT ADV.	
RCR	Opr RSC/CRFI & win maint avbl 11-04Z± O/T 8 hrs PN, call out chg. PLR/PCN	
LIGHTING	04-AO(TE HI) P2, 22-AN(TE HI), 12-AO(TE ME) P2, 30-AO(TE ME) P2	
COMM		
RADIO	125.5 (V) (emerg only 705-693-3661)	
RCO	London rdo 123.475 (FISE) 126.7(bcst)	
ATIS	127.4	
CLNC DEL	121.8	
MF	rdo 125.5 7NM 4000 ASL (CAR 602.98)	
PAL	Toronto Ctr 135.5	
NAV		
NDB	SB 362 (M) N46 38 53 W80 55 22	
DME	YSB 112.3 Ch 70 N46 37 45 W80 47 54 (1171')	
ILS	ISB 110.3 (Rwy 22) RVR LOC reliable only within 10° either side of centreline.	
PRO	Rgt hand circuits Rwys 22 & 30 (CAR 602.96).	
CAUTION	Extv float/ski/helicopter tfc in vic Azilda, ATF 122.8 and Coniston A/D 8NM S, ATF 123.0.	

ONTARIO

AERODROME/FACILITY DIRECTORY

SUDBURY (HEALTH SCIENCES NORTH) ON (Heli)

CSL8

REF	N46 28 05 W80 59 46 Adj SE 10° W UTC-5(4) Elev 985' A5000 A5001
OPR	Health Sciences North, Sudbury 705-523-7100 Ext 1290 Cert PPR
PF	A-1,2,4 C-3,5,6
FLT PLN	FIC London 866-WXBRIEF (Toll free within Canada) or 866-541-4104 (Toll free within Canada & USA)
HELI DATA	
RCR	FATO 86' dia CONC TLOF 80' dia CONC Safety Area 114' dia 20,000 lbs Max heli overall length 57' Opr
LIGHTING	RY (LO) RF (FL) ARCAL-123.05 type J
COMM	ATF tfc 123.0 5NM 4000 ASL, excluding the Azilda ATF area and Sudbury aprt CZ A/G Ambulance dispatch 129.275
PRO	
CAUTION	Elevator lobby on East side and exhaust stacks on West side. Extv float/ski/helicopter tfc in vic Azilda, ATF 122.8 and Coniston ATF 123.0.

